

The logo for Parkinson's UK, featuring the text "PARKINSON'S^{UK}" in white, sans-serif font, centered within a solid blue rectangular background.

PARKINSON'S^{UK}

Parkinson's UK IT Support Torridge Branch

Spring 2016

Session 3 – Customising the mouse

Help is Available Online at www.andrewtregoning.co.uk

Computer Obedience x +

andrewtregoning.co.uk/tasks/index.htm

☆ Google ☆ Researcher Voice -

Littleham Computer Obedience Lessons

PARKINSON'S^{UK}

Obedience Lessons

Tame Your Computer with Andrew

PARKINSON'S^{UK}

Some Useful Resources To Help You
(Click on the link to choose **Save**)

Parkinson's UK IT Support (Torrige Branch)

Session 1	Session 2	Session 3	Session 4	Session 5	Session 6	Session 7	Session 8	Session 9	Session 10
---------------------------	---------------------------	---------------------------	---------------------------	---------------------------	---------------------------	---------------------------	---------------------------	---------------------------	----------------------------

November 2015

Security Issues	Windows 10 Tips and Tricks
---------------------------------	--

[Click Here For The Survey](#)

Autumn 2014 Lessons

Introduction Session	Lesson 2 Making a Calendar	Lesson 3 emailing Photos
Lesson 4 Excel Budget	Lesson 5 Word Tips + Templates	Lesson 6 Formatting

Spring 2014 Lessons

Lesson1 - Intro	Lesson2 - Internet	Lesson 4 - email
Lesson 5 - Digital Photographs	Lesson 6 - Digital Photographs contd	Lesson 7 - Layering Images + text

Student Registration



Recap - Web Page Shortcuts

- **Ctrl + “+”** **Enlarge** text
- **Ctrl + “-”** Reduce text
- **Ctrl + “0”** Set text back to default
- **Alt + Home** Go to Home page
- **Ctrl + “F”** **F**ind on page



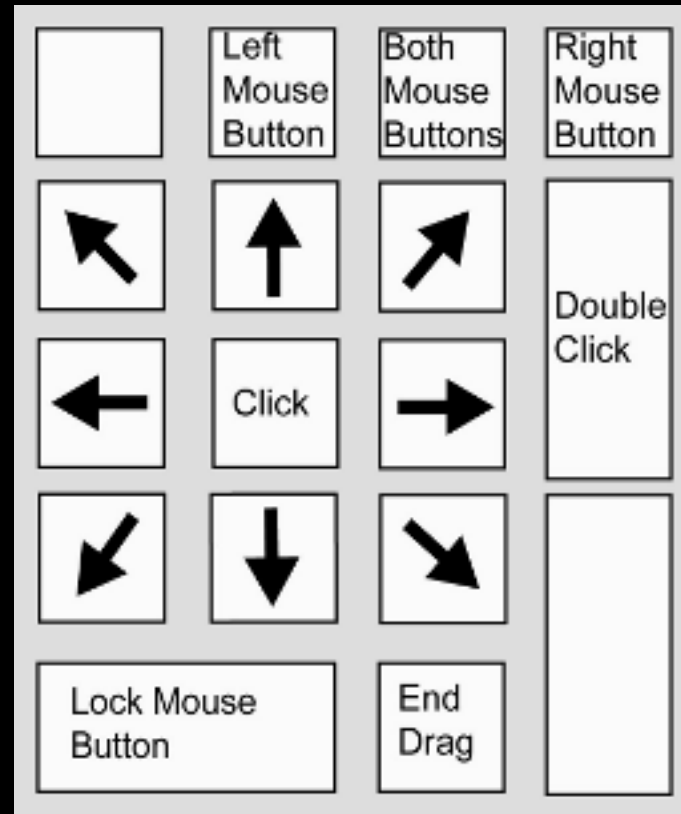
Recap - Web Page Shortcuts

- **Tab** Move to next link on page
- **Shift + Tab** Move to previous link
- **Alt + ←** Go to previous webpage
- **Alt + →** Go to next webpage

You can connect an external keyboard to your laptop



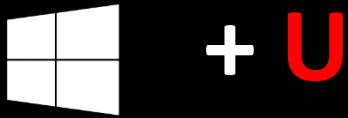
You can use your numeric keypad to control the mouse



Make the mouse easier to use



Open Ease of Access Centre



Select –
Make the
mouse
easier to use

Make your computer easier to use

Quick access to common tools

You can use the tools in this section to help you get started.

Windows can read and scan this list automatically. Press the SPACEBAR to select the highlighted tool.

Always read this section aloud

Always scan this section



Start Magnifier



Start Narrator



Start On-Screen Keyboard



Set up High Contrast



Not sure where to start? [Get recommendations to make your computer easier to use](#)

Explore all settings

When you select these settings, they will automatically start each time you sign in.



Use the computer without a display

Optimise for blindness



Make the computer easier to see

Optimise visual display



Use the computer without a mouse or keyboard

Set up alternative input devices



Make the mouse easier to use

Adjust settings for the mouse or other pointing devices



Make the keyboard easier to use

Adjust settings for the keyboard



Use text or visual alternatives for sounds

Set up alternatives for sounds



Make it easier to focus on tasks

Adjust settings for reading and typing



Make touch and tablets easier to use

Adjust settings for touch and tablets

Experiment with different pointers

Make the mouse easier to use










← → ↕ ⌂ << Ease of Access >> Ease of Access Centre > Make the mouse easier to use Search Co... 🔍

Make the mouse easier to use

When you select these tools, they will automatically start each time you sign in.

Mouse pointers

Change the colour and size of mouse pointers.

<input checked="" type="radio"/> Regular White 	<input type="radio"/> Regular Black 	<input type="radio"/> Regular Inverting 
<input type="radio"/> Large White 	<input type="radio"/> Large Black 	<input type="radio"/> Large Inverting 
<input type="radio"/> Extra Large White 	<input type="radio"/> Extra Large Black 	<input type="radio"/> Extra Large Inverting 

Control the mouse with the keyboard

Turn on **M**ouse Keys
Use the numeric keypad to move the mouse around the screen.
[Set up Mouse Keys](#)

Make it easier to manage windows

Activate a **w**indow by hovering over it with the mouse

Prevent windows from being automatically arranged when moved to the edge of the screen










Select Mouse Settings

Make the mouse easier to use

When you select these tools, they will automatically start each time you sign in.

Mouse pointers

Change the colour and size of mouse pointers.

<input checked="" type="radio"/> Regular White		<input type="radio"/> Regular Black		<input type="radio"/> Regular Inverting	
<input type="radio"/> Large White		<input type="radio"/> Large Black		<input type="radio"/> Large Inverting	
<input type="radio"/> Extra Large White		<input type="radio"/> Extra Large Black		<input type="radio"/> Extra Large Inverting	

Control the mouse with the keyboard

Turn on Mouse Keys

Use the numeric keypad to move the mouse around the screen.

[Set up Mouse Keys](#)

Make it easier to manage windows

Activate a window by hovering over it with the mouse

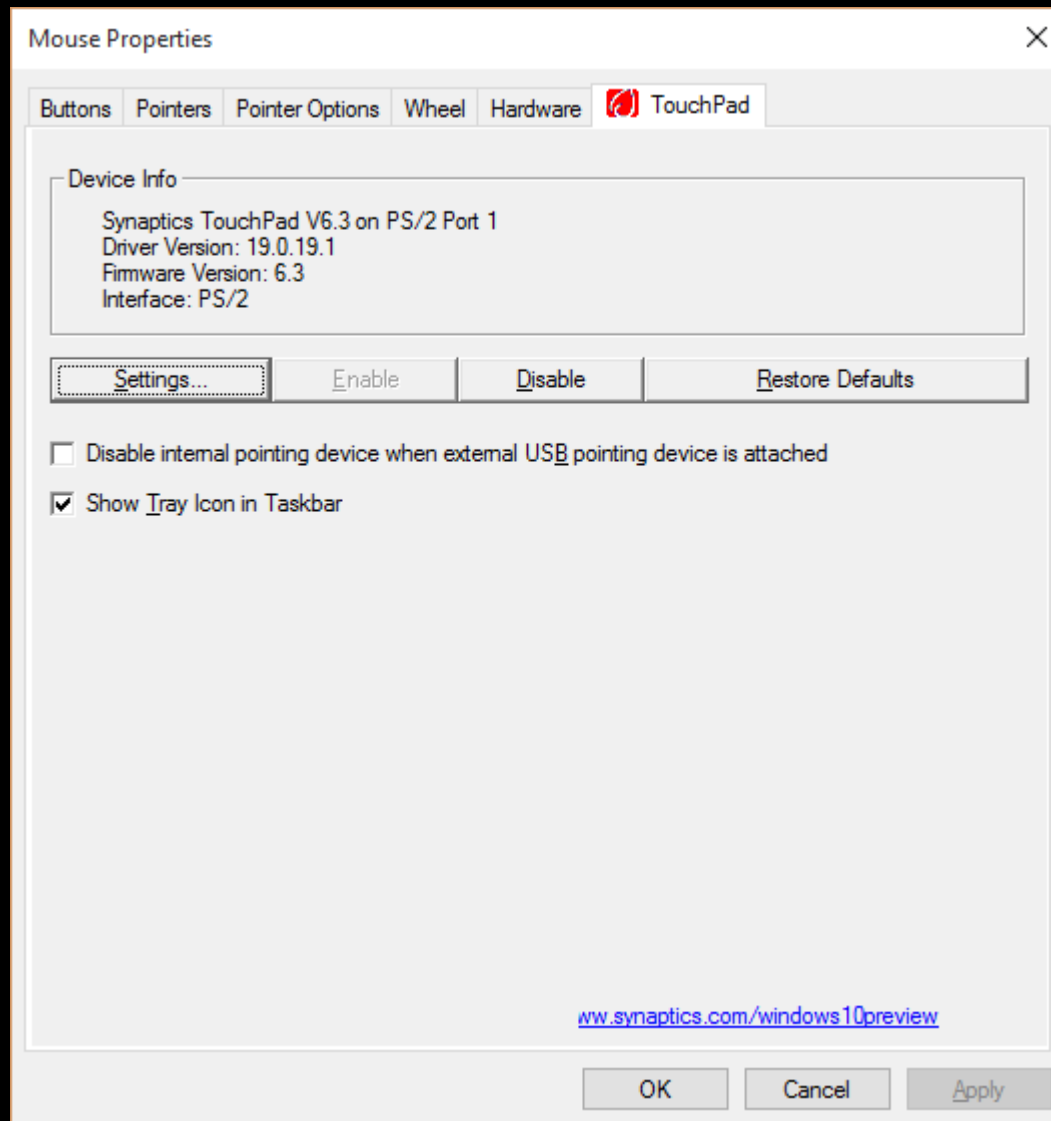
Prevent windows from being automatically arranged when moved to the edge of the screen

See also

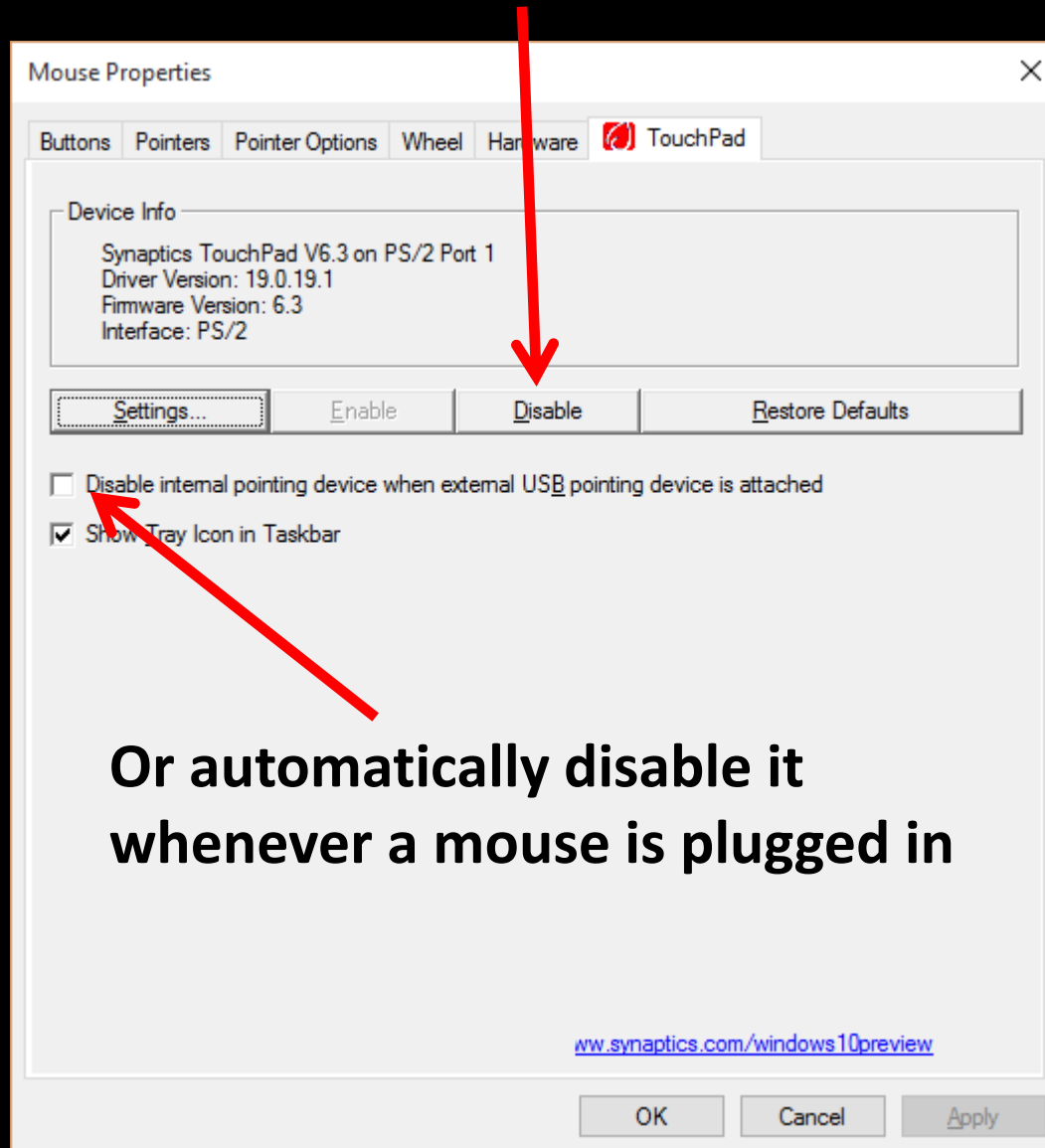
[Mouse settings](#)

[Learn about additional accessibility technologies online](#)

Select Mouse Settings

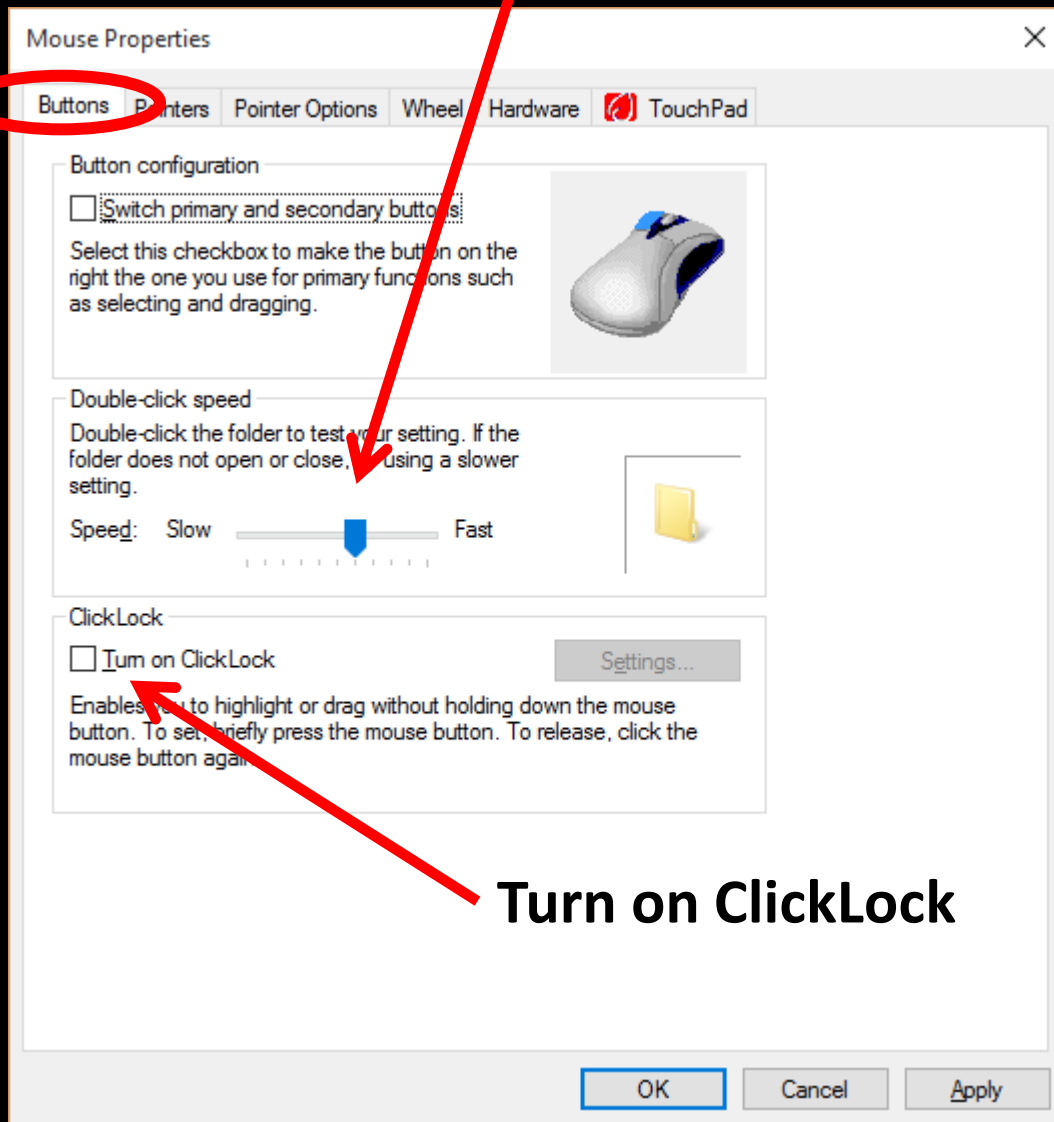


You can disable the TouchPad

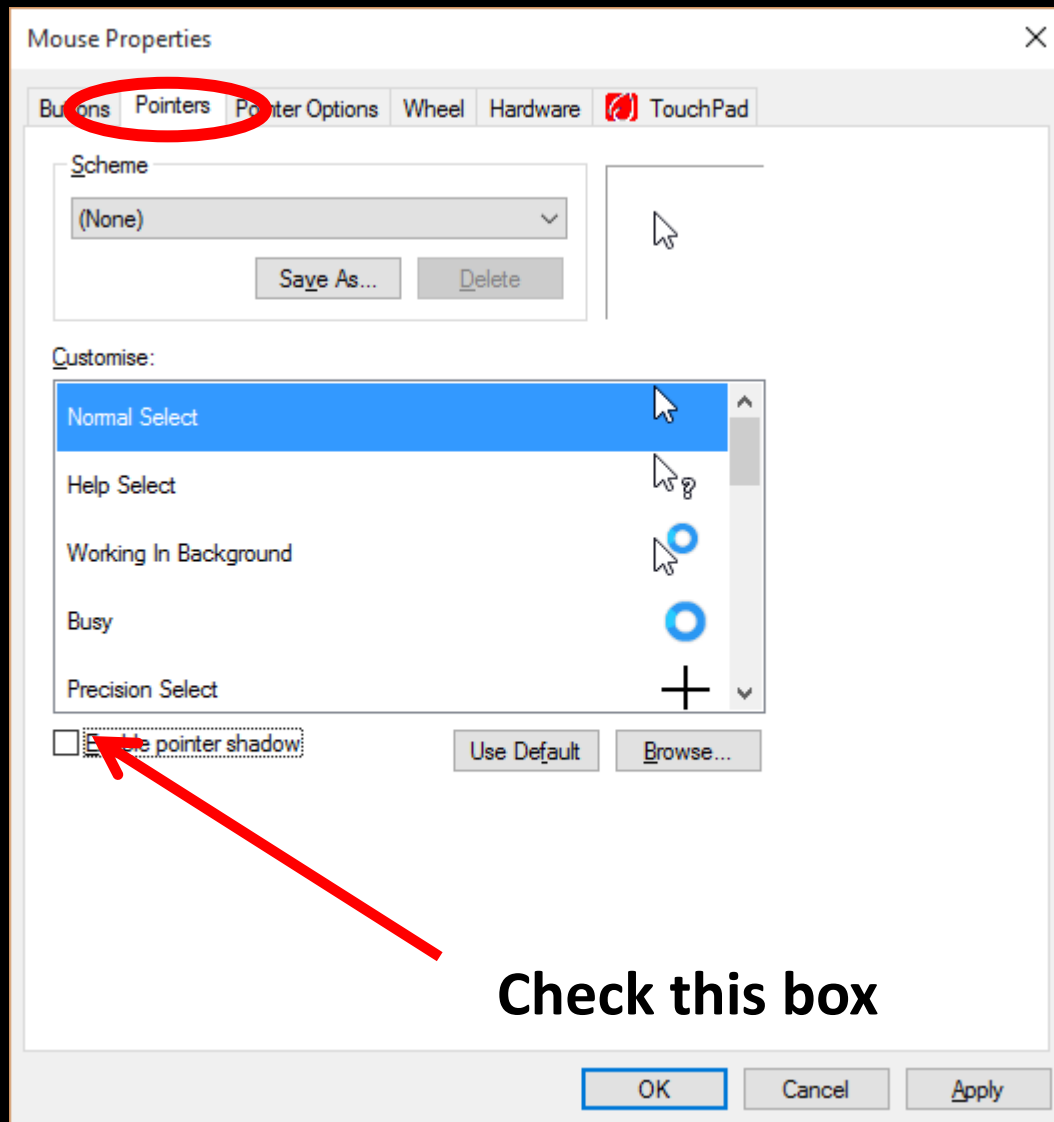


**Or automatically disable it
whenever a mouse is plugged in**

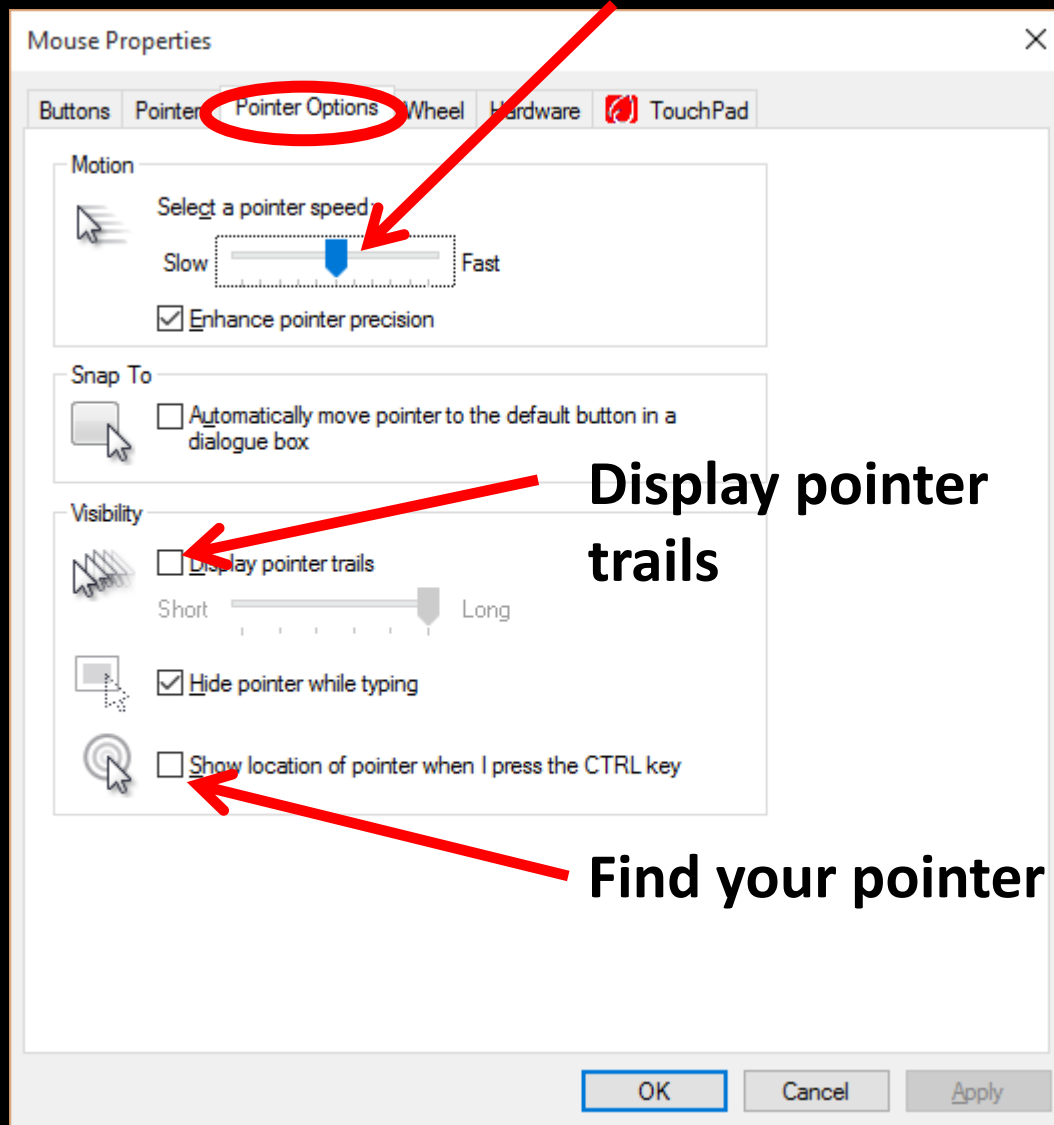
You can change Double-Click speed



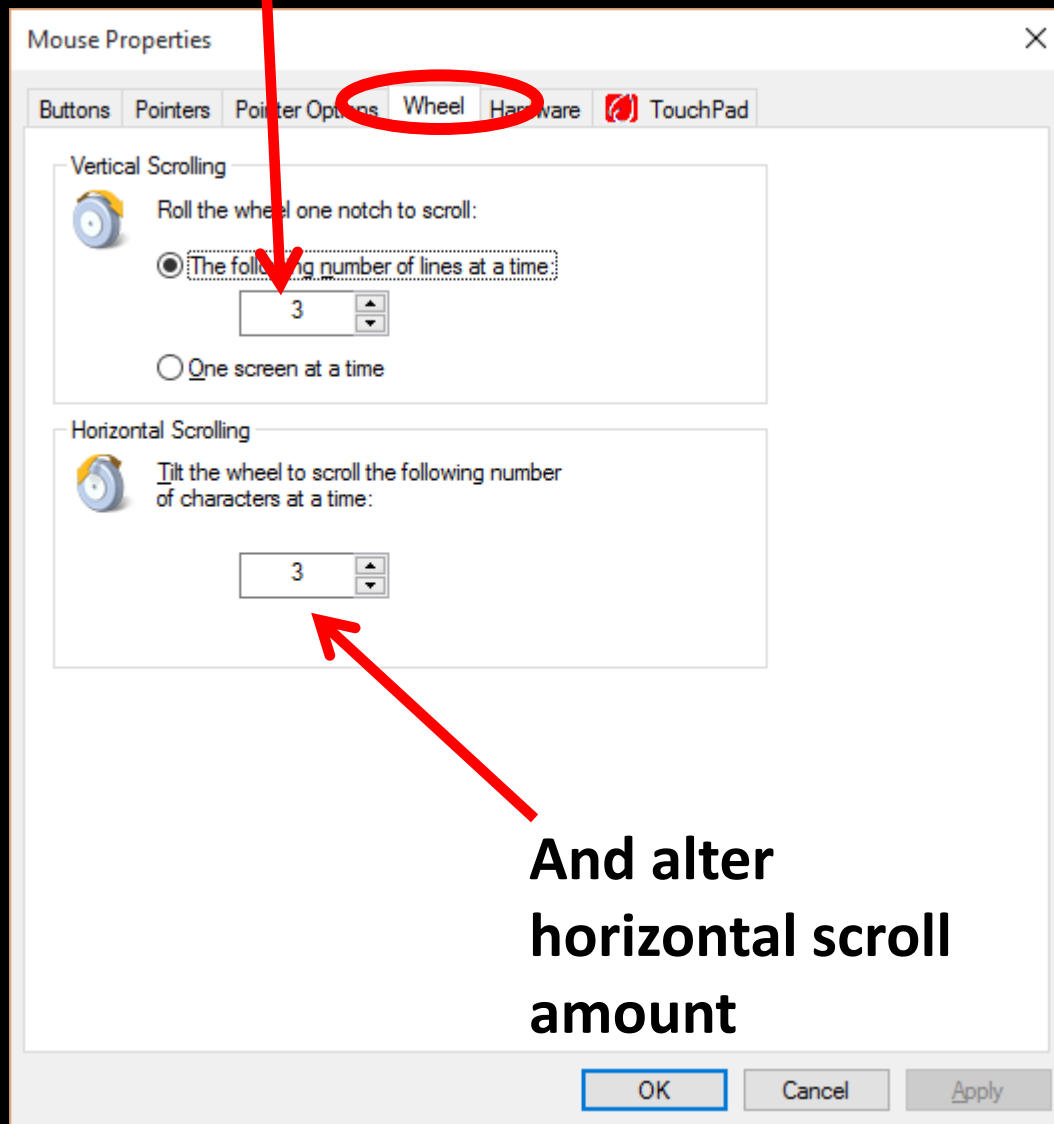
You can enable pointer shadow



You can adjust pointer speed



You can change scroll speed



And alter
horizontal scroll
amount

Task

Experiment with all these different mouse options and decide which ones you like.

Use these and the keypresses you have learnt to help research “Parkinson’s and Computers” on the web.

That's it folks!



You can all go for a lie down in a darkened room now!